

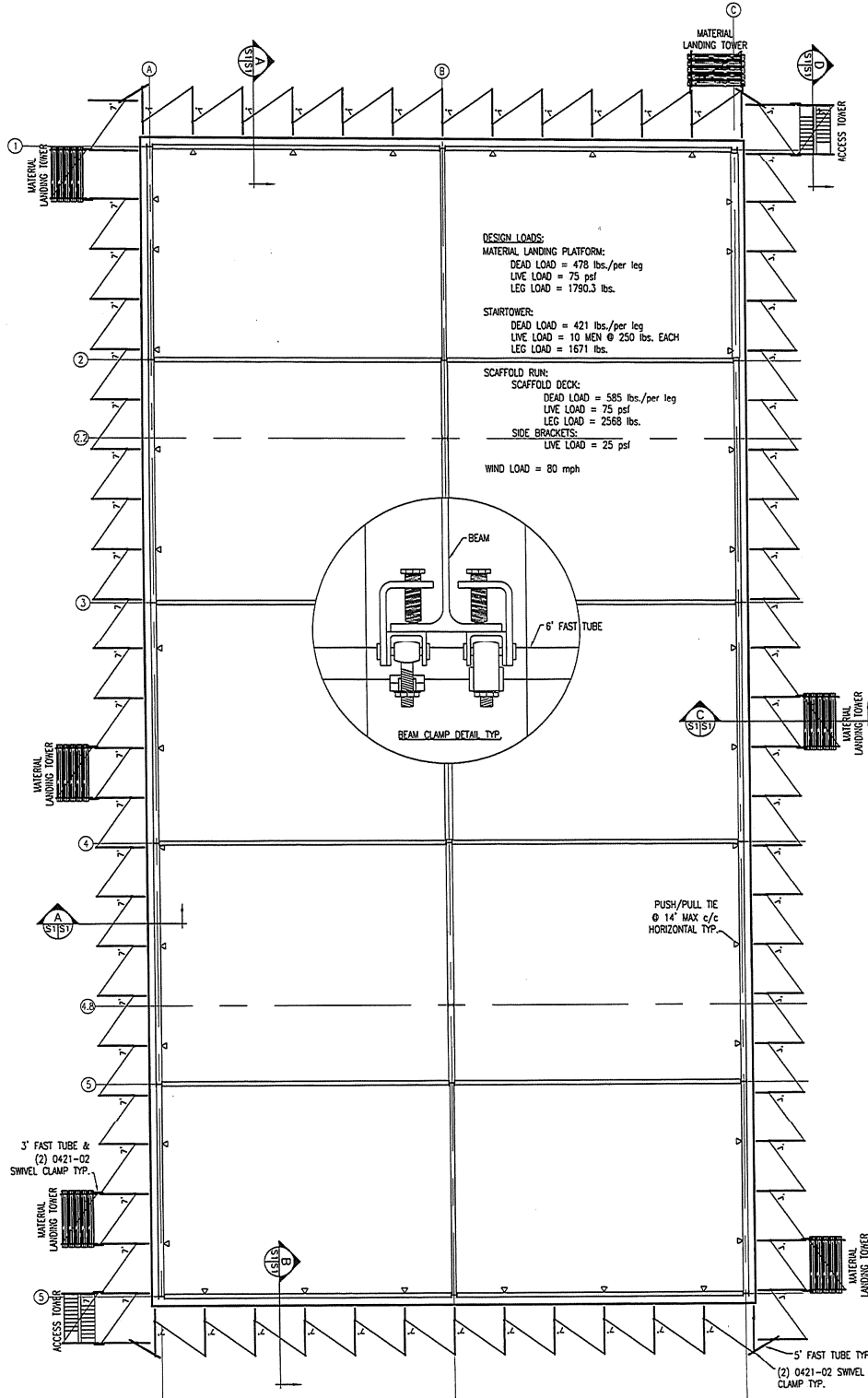


Scaffolding & Equipment

PROJECT	UNITED STATES ARMY RESERVE CENTER		SHEET NO.	SK-01
CONTRACTOR	NORTHERN VALLEY CONSTRUCTION		DRWG. BY	CS
JOB NUMBER	07-RSC-6851	REV.	Ø	DATE
SALESMAN	JEFF BRUGH		CHECKD. BY	
		BRANCH	07 - CANTON	

The details provided in this drawing, including dimensions, load limits and product capabilities are for ORIGINAL WACO Scaffolding and/or Shoring products only! The recipient of this information is aware of these restrictions and assumes all risks when using this information with competitive materials, INCLUDING those advertised as "WACO compatible, WACO style, or interchangeable with WACO".

This drawing is intended to show equipment layout information and spacing. The actual equipment supplied for the project may differ from the equipment shown on this layout based on availability. WACO Scaffolding & Equipment reserves the right to allow structurally acceptable substitute equipment as necessary.



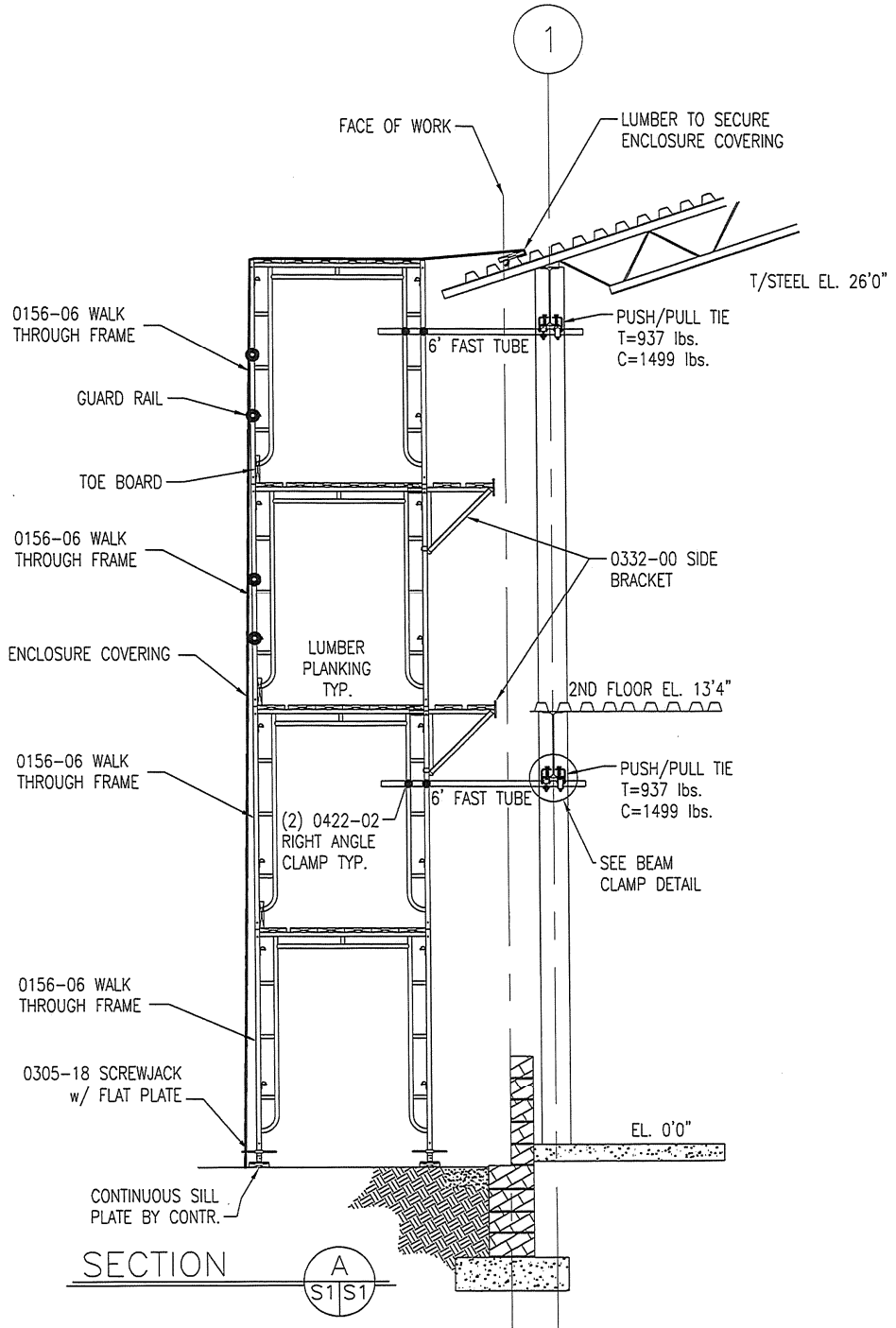
PLAN



PROJECT UNITED STATES ARMY RESERVE CENTER		SHEET NO. SK-02	
CONTRACTOR NORTHERN VALLEY CONSTRUCTION		DRWG. BY CS	
JOB NUMBER 07-RSC-6851	REV. Ø	DATE 12/02/04	CHEKD. BY
SALESMAN JEFF BRUGH		BRANCH 07 - CANTON	

The details provided in this drawing, including dimensions, load limits and product capabilities are for ORIGINAL WACO Scaffolding and/or Shoring products only! The recipient of this information is aware of these restrictions and assumes all risks when using this information with competitive materials, INCLUDING those advertised as "WACO compatible, WACO style, or interchangeable with WACO".

This drawing is intended to show equipment layout information and spacing. The actual equipment supplied for the project may differ from the equipment shown on this layout based on availability. WACO Scaffolding & Equipment reserves the right to allow structurally acceptable substitute equipment as necessary.



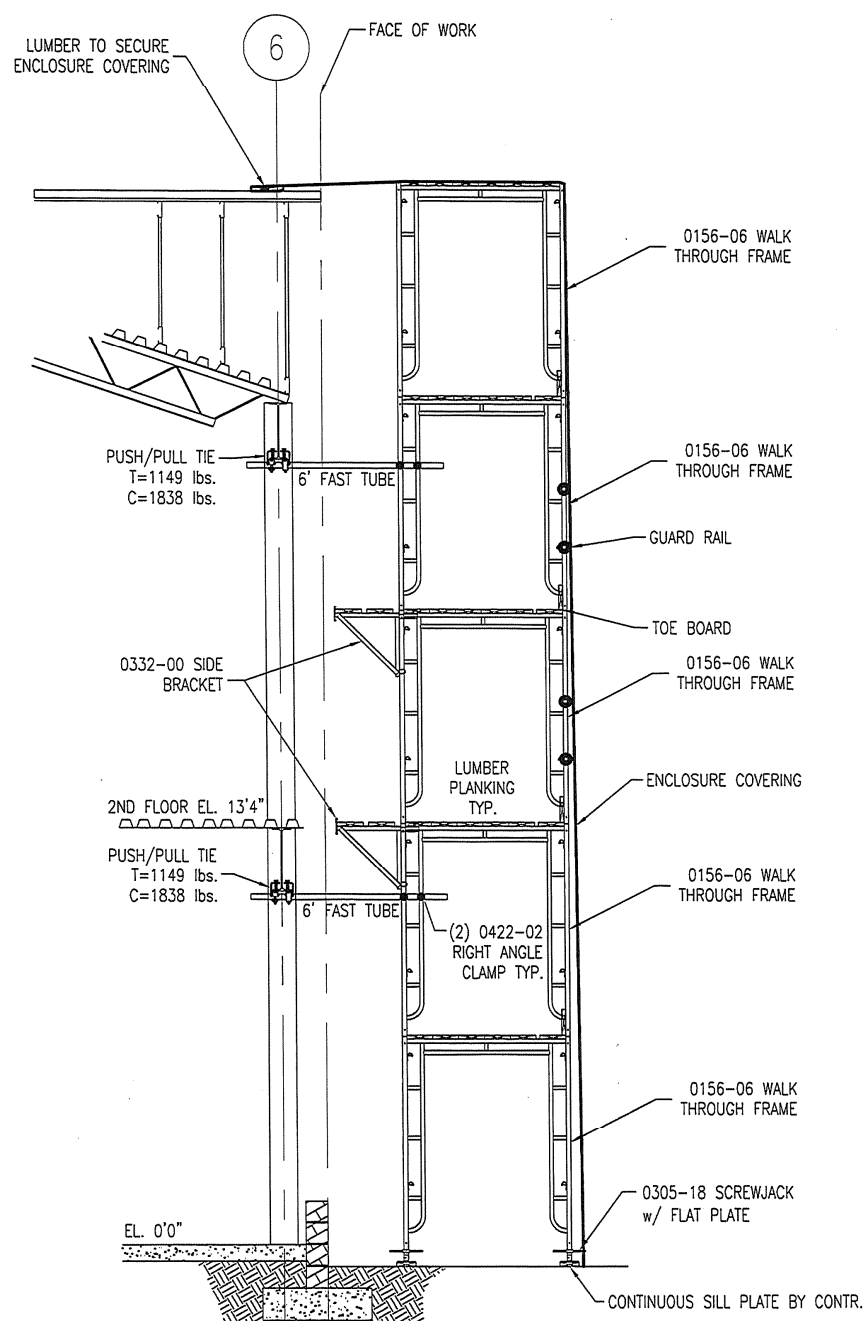


Scaffolding & Equipment

PROJECT	UNITED STATES ARMY RESERVE CENTER		SHEET NO.	SK-03
CONTRACTOR	NORTHERN VALLEY CONSTRUCTION		DRWG. BY	CS
JOB NUMBER	07-RSC-6851	REV.	Ø	DATE
				12/02/04
SALESMAN	JEFF BRUGH		CHECKD. BY	
			BRANCH	07 - CANTON

The details provided in this drawing, including dimensions, load limits and product capabilities are for ORIGINAL WACO Scaffolding and/or Shoring products only! The recipient of this information is aware of these restrictions and assumes all risks when using this information with competitive materials, INCLUDING those advertised as "WACO compatible, WACO style, or interchangeable with WACO".

This drawing is intended to show equipment layout information and spacing. The actual equipment supplied for the project may differ from the equipment shown on this layout based on availability. WACO Scaffolding & Equipment reserves the right to allow structurally acceptable substitute equipment as necessary.

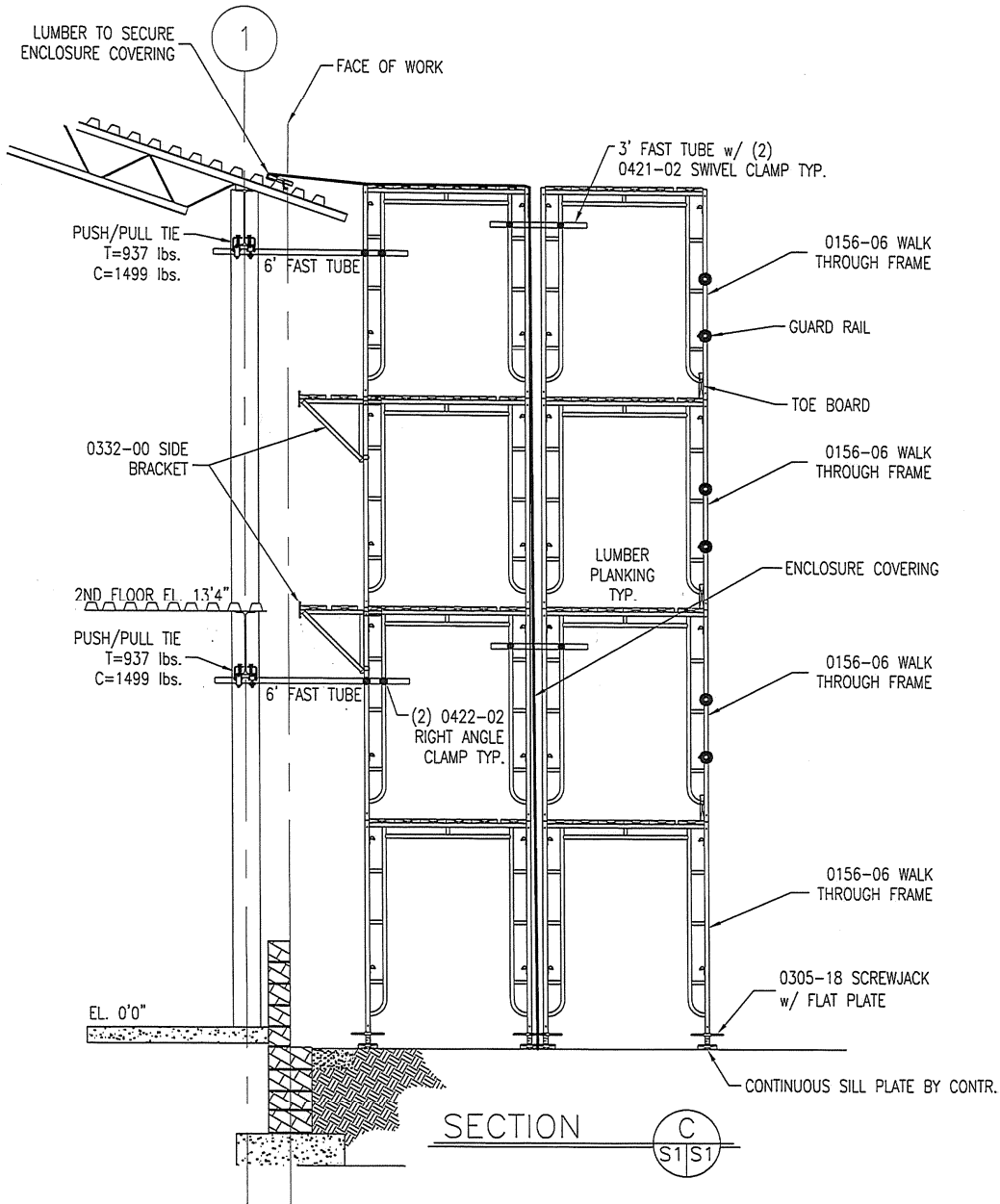


SECTION B
S1|S1

PROJECT UNITED STATES ARMY RESERVE CENTER		SHEET NO. SK-04	
CONTRACTOR NORTHERN VALLEY CONSTRUCTION		DRWG. BY CS	
JOB NUMBER 07-RSC-6851	REV. Ø	DATE 12/02/04	CHECKD. BY
SALESMAN JEFF BRUGH		BRANCH 07 - CANTON	

The details provided in this drawing, including dimensions, load limits and product capabilities are for ORIGINAL WACO Scaffolding and/or Shoring products only! The recipient of this information is aware of these restrictions and assumes all risks when using this information with competitive materials, INCLUDING those advertised as "WACO compatible, WACO style, or interchangeable with WACO".

This drawing is intended to show equipment layout information and spacing. The actual equipment supplied for the project may differ from the equipment shown on this layout based on availability. WACO Scaffolding & Equipment reserves the right to allow structurally acceptable substitute equipment as necessary.





PROJECT	UNITED STATES ARMY RESERVE CENTER		SHEET NO.	SK-05			
CONTRACTOR	NORTHERN VALLEY CONSTRUCTION		DRWG. BY	CS			
JOB NUMBER	07-RSC-6851	REV.	Ø	DATE	12/02/04	CHECKD. BY	
SALESMAN	JEFF BRUGH		BRANCH	07 - CANTON			

The details provided in this drawing, including dimensions, load limits and product capabilities are for ORIGINAL WACO Scaffolding and/or Shoring products only! The recipient of this information is aware of these restrictions and assumes all risks when using this information with competitive materials, INCLUDING those advertised as "WACO compatible, WACO style, or Interchangeable with WACO".

This drawing is intended to show equipment layout information and spacing. The actual equipment supplied for the project may differ from the equipment shown on this layout based on availability. WACO Scaffolding & Equipment reserves the right to allow structurally acceptable substitute equipment as necessary.

NOTE
MAXIMUM LIVE LOAD:
(10) MEN (MAX.) ON STAIR
UNIT AT ANY ONE TIME.

